

PLAIN CITY
BLOCK 14, PLAT A

TAXING UNIT: 21

SCALE 1" = 50'

SEE PAGE 41

17

2575

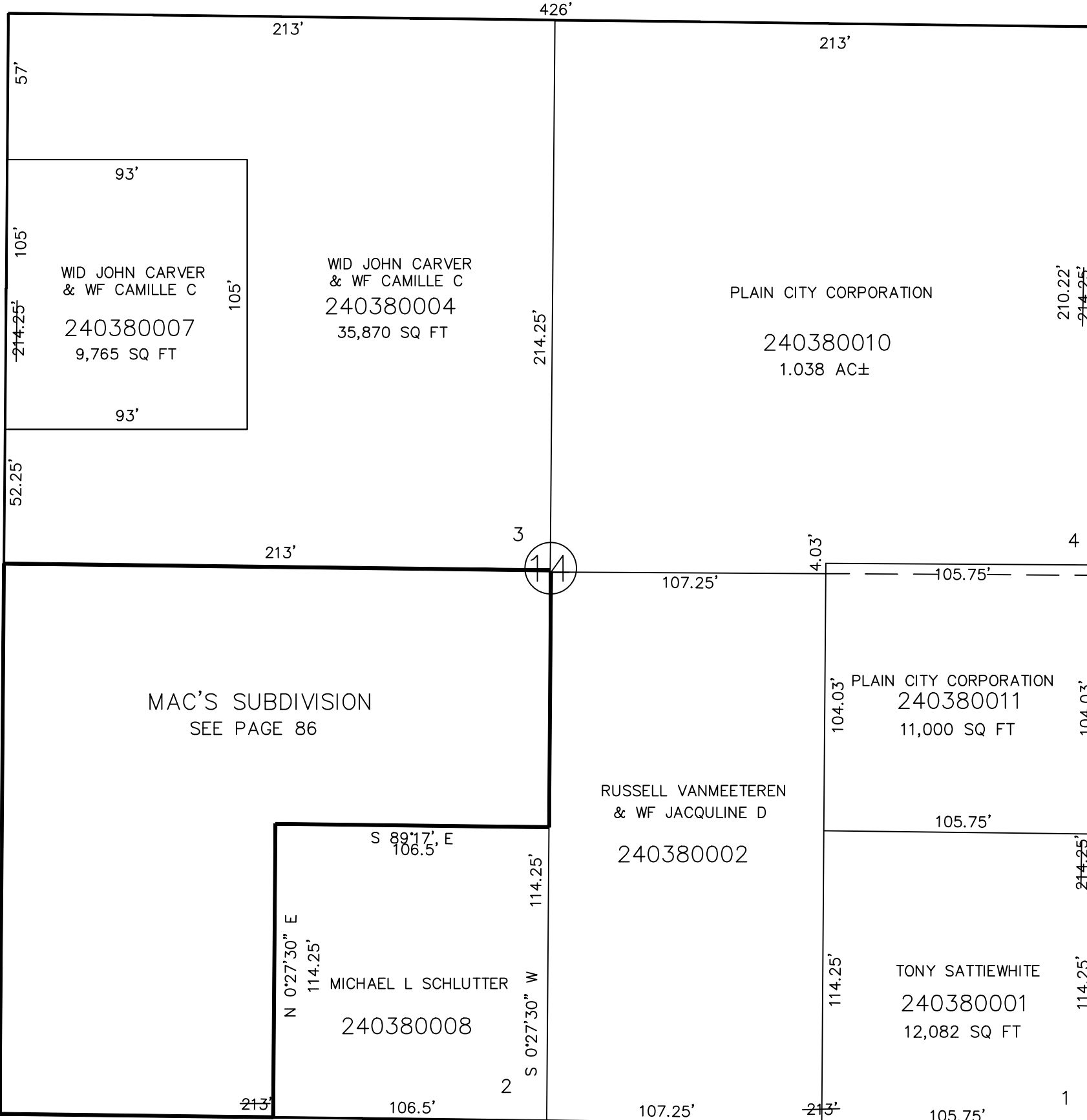
NORTH

STREET

S 89°17' E

WEST STREET

WEST STREET



SEE PAGE 39

15

SEE PAGE 37

13

4425

4350

2500

NORTH

STREET

S 89°17' E

11

SEE PAGE 35

SEE ORIGINAL DEDICATION
PLAT OF PLAIN CITY IN
BOOK 5, PAGE 80 OF RECORDS.